

BLASI FST façade / terrace sliding door



SYSTEM:

The automatic sliding door FST is designed to offer solutions for the operation of balcony or terrace doors where a high sealant is required. Standard automatic doors do not provide a watertight or high resistance such as FST doors can do. This can be achieved with the use of window profiles from any curtain-wall system. Together with the clever FST design a sealed and as well a comfortable and secure system is provided.

The innovation behind the façade / terrace sliding door is the pop-out drive system that slides out of the façade and positions the leaf parallel to the fixed side screen. During closing the door again slides automatically back into the façade opening and closes flush with the façade. The FST system is available in a manual or automatic (dead-man controlled) version.

- Sealed and secured terrace / balcony door where no conventional automatic door could provide a solution
- Aesthetically design with a fully flush outer skin that offers an unique and impressive look, provides as well a secure and totally unique solution
- Comfortable use even for large door leaves at your balcony or façade opening
- Air- and water tightness solutions in different designs available
- Window functions, system can be stopped anywhere for ventilation purposes
- APS design for high sealant and security requirements by using a standard window profile
- IPS design for low seal requirements in a pure glass build up without any visible profiles

BLASI FST façade / terrace sliding door

Passage Opening "A"		
Minimal	550 mm	≈ 21"
Maximal	3500 mm	≈ 11' - 6"

Passage Height "S"		
Minimal	1200 mm	≈ 47"
Maximal	3500 mm	≈ 11' - 6"

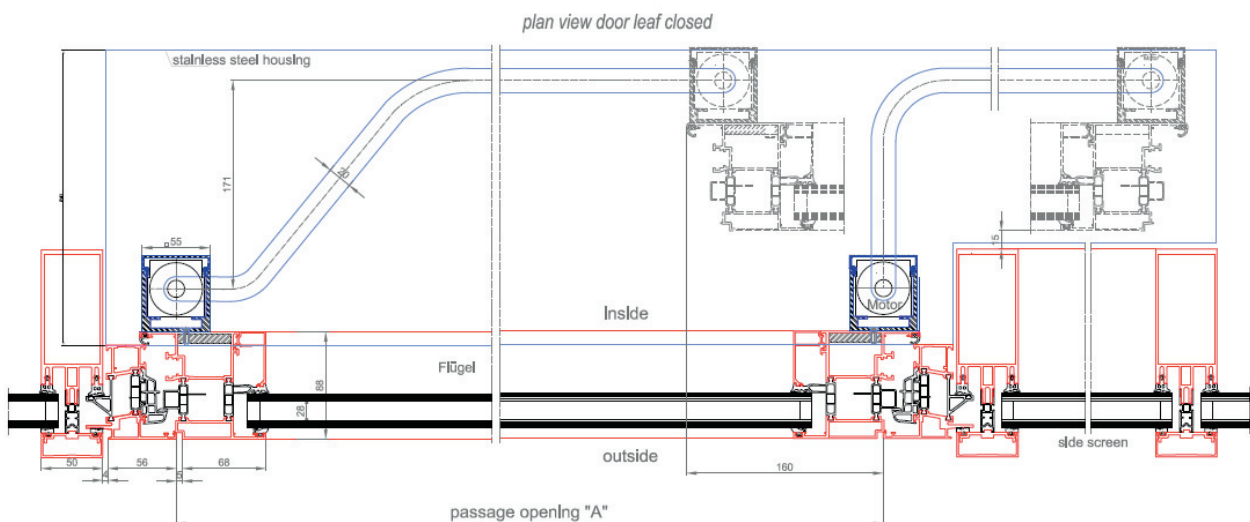
Guide Track Length "F"		
STANDARD	"A" x 2 = opening with 80%	
SPECIAL	"A" x 2 + 150mm = opening with 100%	

Installation Height of Top-Guide	
66 mm (net)	2 - 5/8" (net)

Width of Guide Track (bottom & top)		
APS - minimal	240 mm	≈ 9 - 3/8"
APS - maximal	500 mm	≈ 20"
IPS - minimal	160 mm	≈ 6 - 1/8"
IPS - maximal	500 mm	≈ 20"
Definitive width of track will be determined by thickness of window-profile or door leaf profile		

Weight per Door Leaf		
Standard weight	< 300 kg	661 lbs
Max. weight <u>on request</u>	< 600 kg	1322 lbs

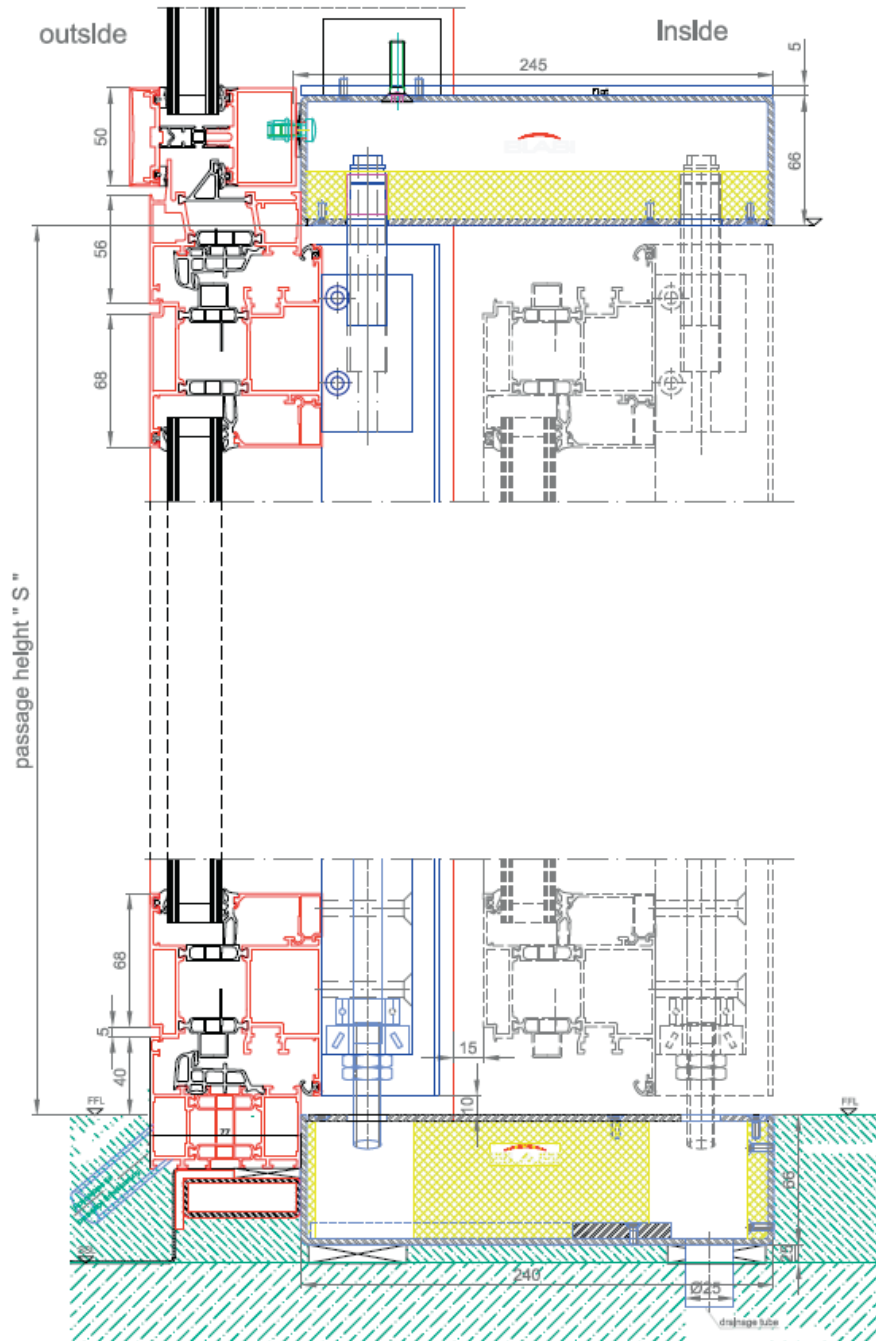
Installation Depth of Bottom Track-Guide	
66 mm (net)	2 - 5/8" (net)



Plan view of door leaf and side screen:

FST - APS design system with a standard window profile as shown above. The vertical drive tubes are attached to the profile system (as shown in blue colour).

BLASI FST façade / terrace sliding door



Vertical section:

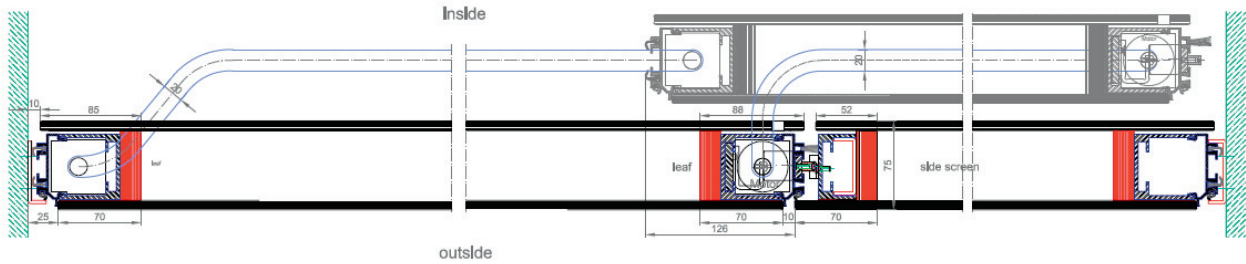
Top guide with attached drive system at door leaf (shown in blue)
Encasing in stainless steel 304 / brushed 240 grain

The complete load of the door leaf is distributed on the bottom track. Top track absorbs only vertical loads such as wind-force.
The vertical drive tube is a special aluminium extrusion by BLASI.

Bottom guide (track) installed below finished floor.
Encasing in stainless steel 304 / brushed 240 grain

NOTE:
Drainage outlet required to drain water out of the bottom track (necessary for all systems).

BLASI FST façade / terrace sliding door

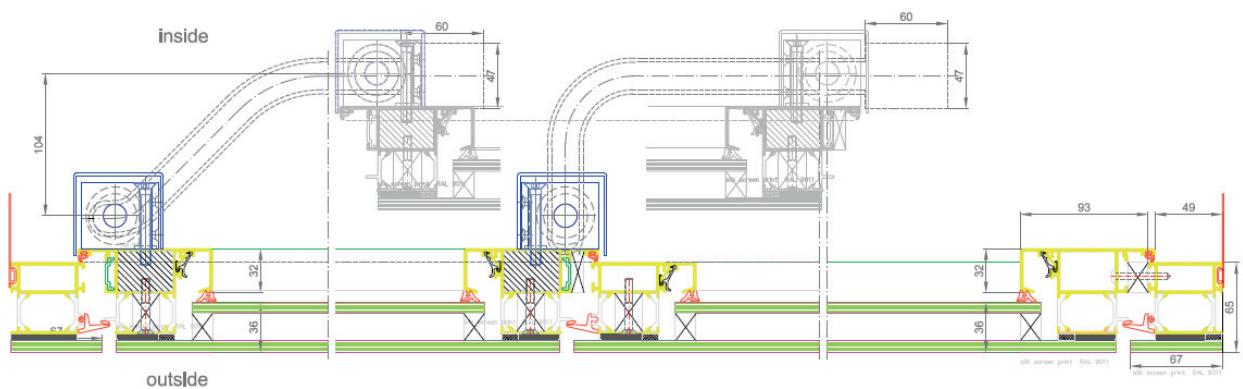


ABOVE plan view IPS:

IPS full glass design for low air- and watertight applications, especially residential and private

BELOW plan view APS stepped:

APS with a stepped double glass design, achieves an all-glass appearance from the outside



BLASI FST façade / terrace sliding door

BASIC EQUIPMENT:

Every automatic façade / terrace sliding door FST is equipped with the following basic parts and features:

- 1 no. Standard operating switch with following modes: (Open – Stop – Close)
- 1 no. Over current recognition system

APS – DESIGN:

The FST - APS system is designed where BLASI only provides the vertical drive tubes and the top-and bottom track.

That allows the local metal shop or curtain-wall company to manufacture their own window system and BLASI provides the add-on equipment. The APS ensures a cost efficient execution and can be adapted to almost every standard window profile system.

Benefits:

- reduced cost through local manufacture of door leaf and side-screen
- full air- and water tightness
- window multipoint locking system
- all standard double glass can be used
- best U-values can be achieved

IPS – DESIGN:

The IPS design requires that BLASI provides the complete special door leaf and the side screen (side light) based on the special design.

The IPS is a high end designed system that is especially developed for the private and residential market with limited U-values. Standard glass build up with 10mm safety toughened x 65mm air spacer and 10mm safety toughened glass with silk-screen print all around to hide the inside drive tubes.

Benefits:

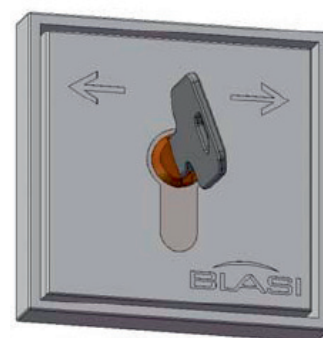
- impressive glass appearance & design
- low air- and water tightness
- locking system
- designed for residential and private use

SURFACE:

The surface can be provided in any standard RAL powder coating or standard anodizing where BLASI provides and uses the highest quality. Stainless steel clad surface in quality 304 or 316, bronze or brass are also possible on a totally bespoke execution.

OPTIONS:

- Monitoring contacts for door position and lock status (low voltage, NO)
- Low Iron Glass (White-Glass); tinted glass and special glasses on request
- APS execution where BLASI can also provide window system profiles on a bespoke solution
- Individual design executions possible on request, possible such as signage, special illumination etc.
- Supervisor by BLASI will provide support, training and supervises the local partner during the installation
- Wireless remote control to open and close the FST window from any place (operation does still requires a dead-man function, as longest push button is activated, the door will run)
- Operating key push button as shown below:



BLASI FST façade / terrace sliding door

TECHNICAL DATA:

Rated Voltage	100 V – 240 VAC / 47 – 63 Hz
Control Voltage	24 DVC
Power consumption	150 W
Protection class	IP 20
Control system	TA12 - V1.12

Speed (fixed)	approx. 0,1m/s (\approx 0,32 f/s)
Gear ratio @ motor	standard with 64:1
Locking system	multipoint locking system that is provided by the window supplier as a standard, automated by BLASI with 24V DC motor

- all cables and conduits to be supplied by others (as per wiring diagram by Blasi)
- optionally monitoring contacts for status of lock and door position (potential free, NO)

ENVIRONMENTAL CONDITIONS:

Temperature Range	-15°C (45°F) up to + 50°C (105°F)
Humidity Range	up to 85% relative humidity
Case Protection	IP 20 (for protected internal use)

CONTACT:

BLASI GmbH
Automatic Door Systems
Carl-Benz-Str. 5 – 15
77972 Mahlberg / Germany

P.: +49 7822 893-160
F.: +49 7822 893-169

Email: sales@blasi.info
Web: www.blasi.info



NOTE: Blasi reserves the right for technical or content alterations without pre-notification at any time.